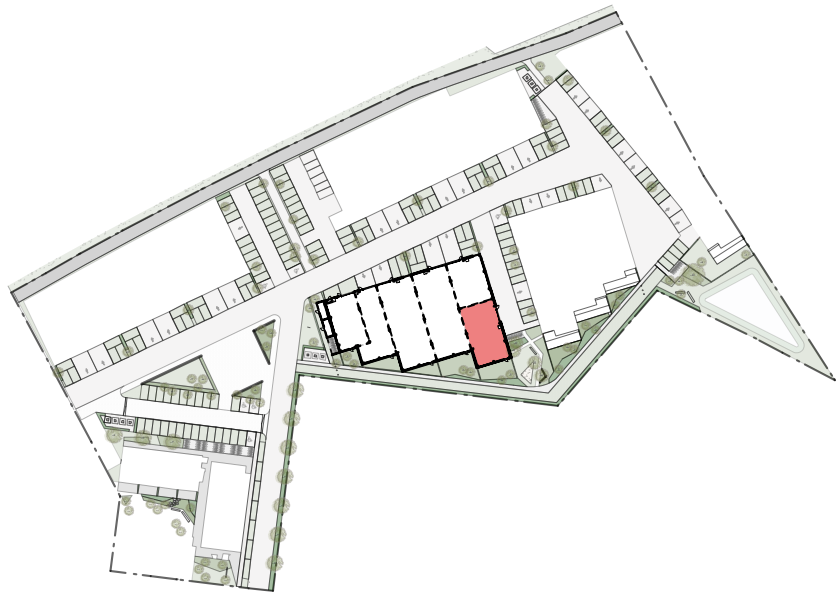


De Stip: Deerlijkse Steenweg - Harelbeke

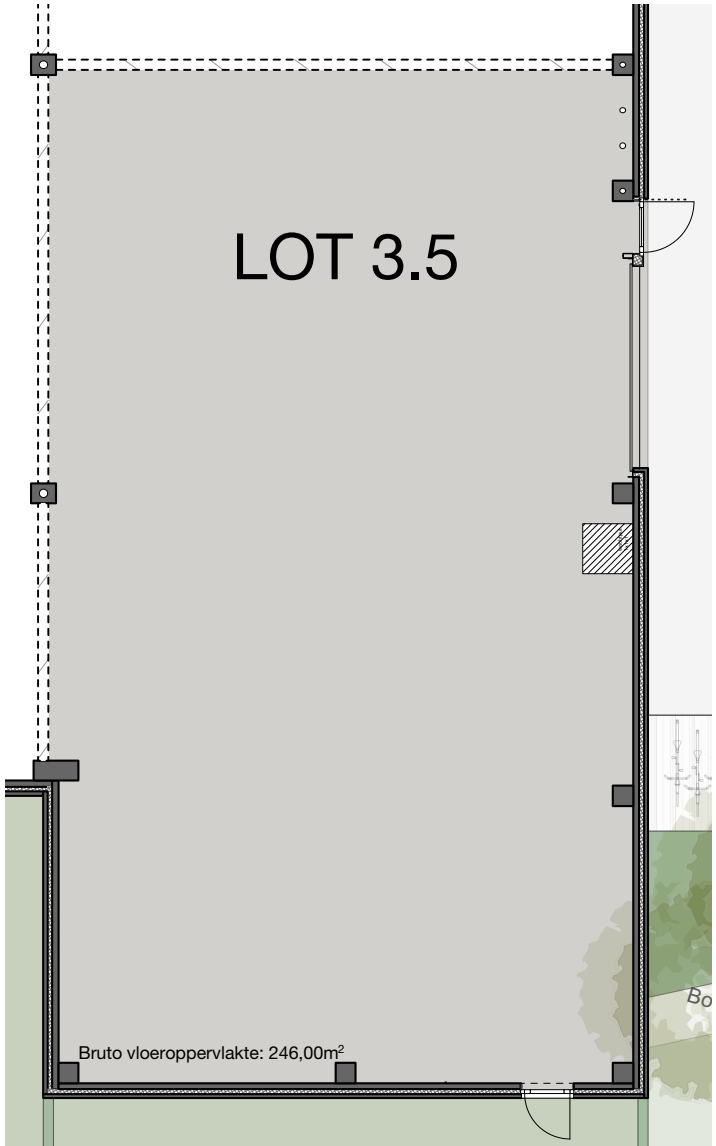
Aantal parkeerplaatsen voor lot 3.5: 0

Bruto vloeroppervlakte lot 3.5: 246 m²

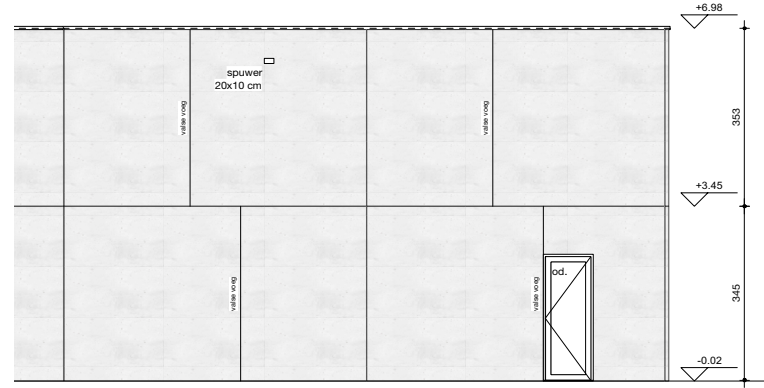
Netto vloeroppervlakte lot 3.5: 232 m²



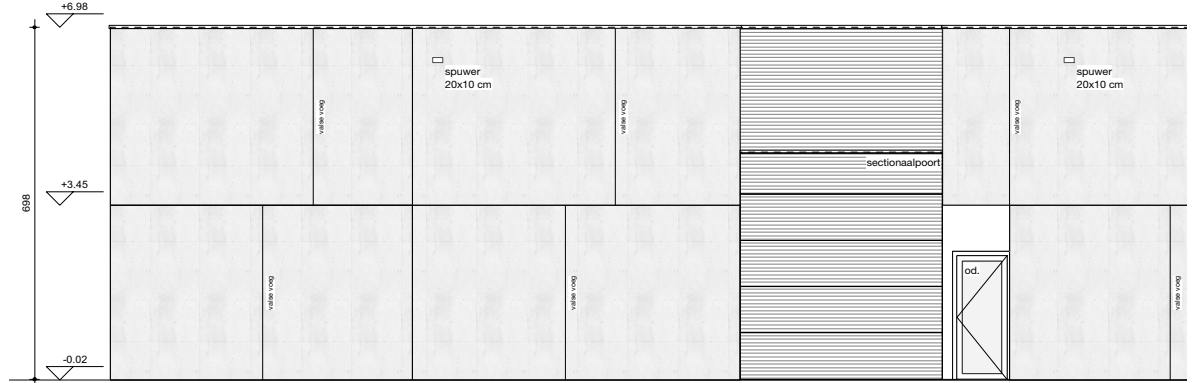
Inplantingsplan schaal 1:2500



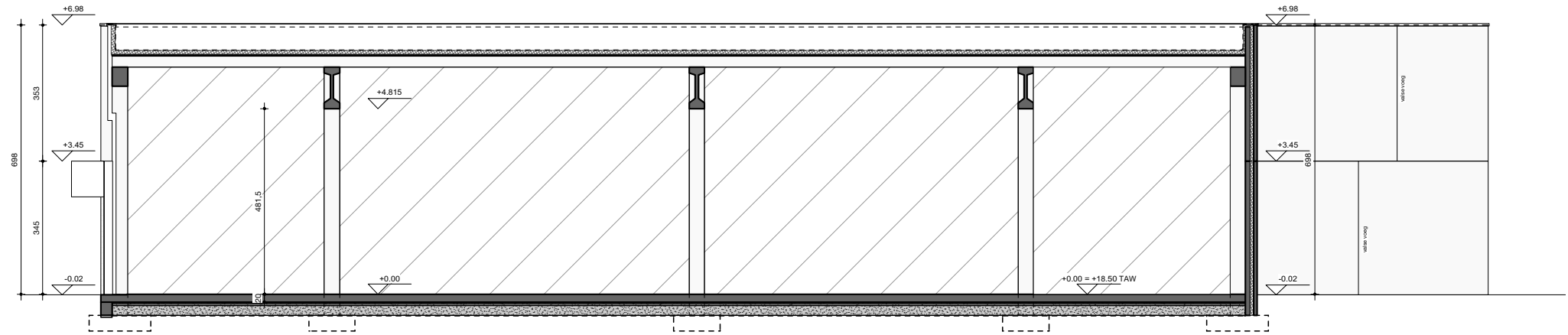
Grondplan schaal 1:150



Achtergevel schaal 1:150



Zijgevel schaal 1:150



Principesnede BB schaal 1:150